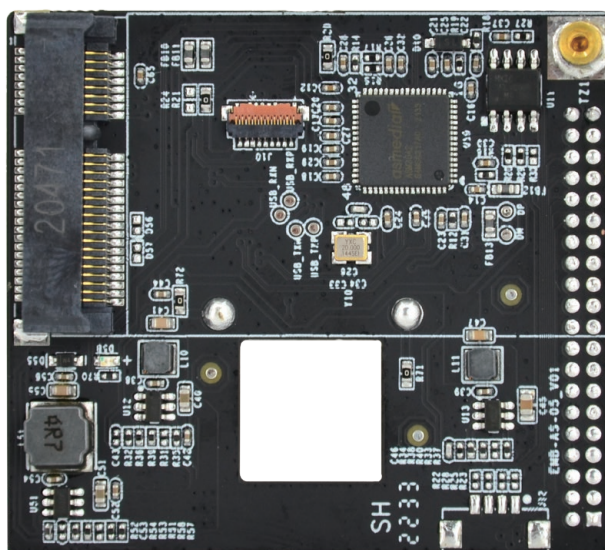


DEBIX 4G Board



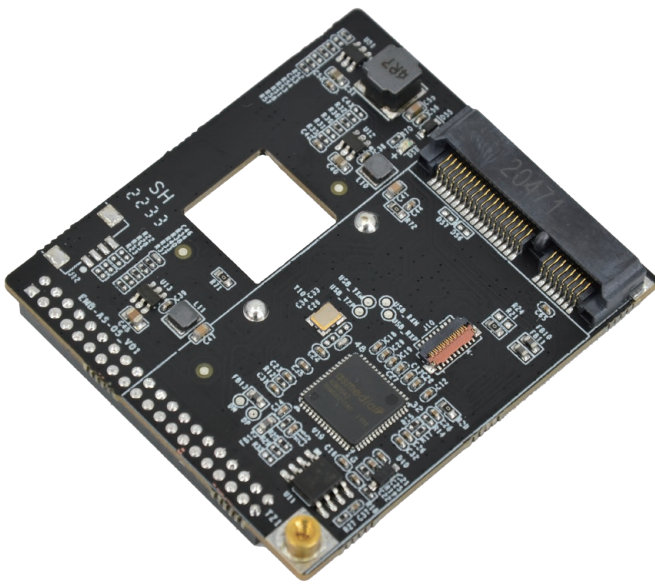
DEBIX 4G Board

Overview:

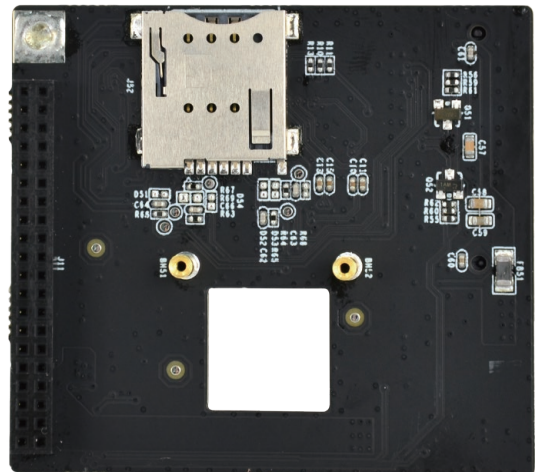
DEBIX 4G Board is an add-on board for the DEBIX Model A, DEBIX Model B and DEBIX Model SE, and provides 4G network connectivity to DEBIX SBC. In a small size of 57.0mm x 51.3mm, it has one Mini PCIe slot for 4G module and one Micro SIM slot.

Compatibility:

- Compatible with DEBIX Model A, DEBIX Model B, DEBIX Model SE
- Can be installed with DEBIX Model A or DEBIX Model B in the EMC-7090B enclosure



(Front View)

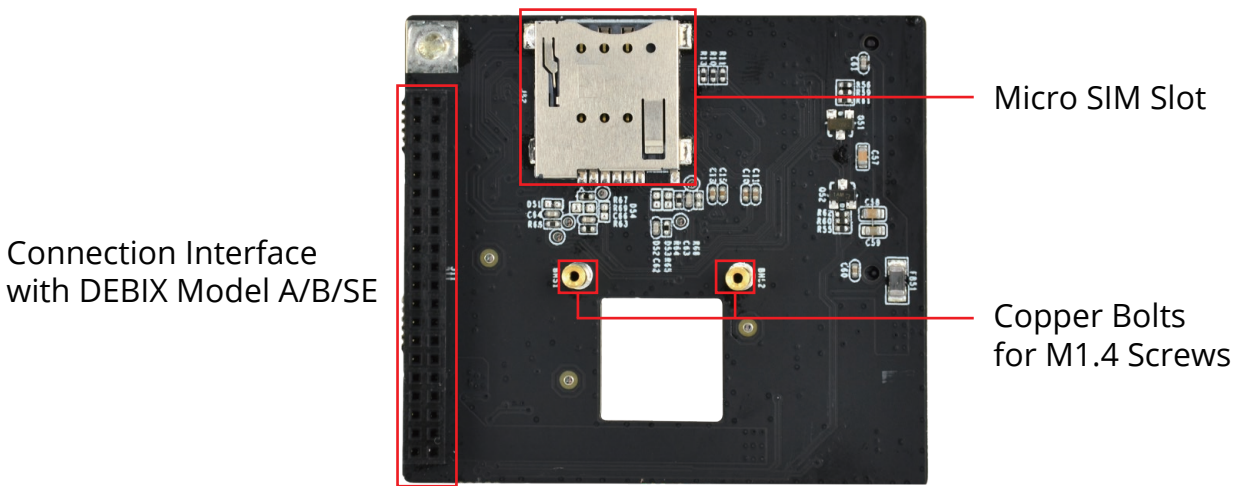
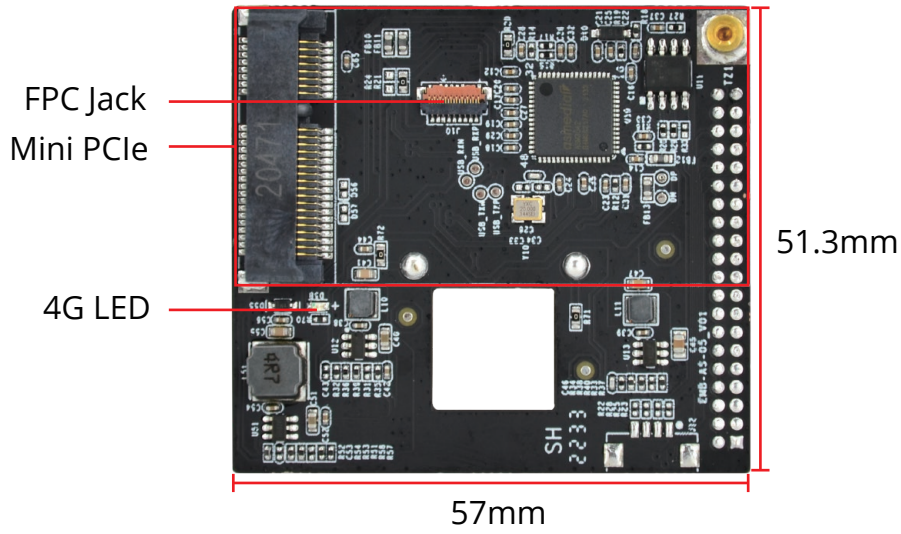


(Back View)

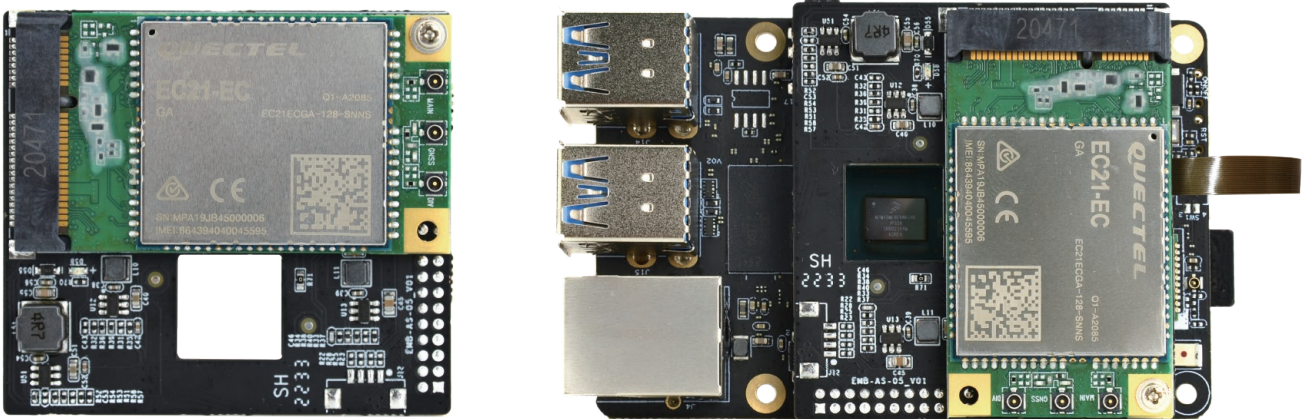
Specification:

SIM Slot	1 x Micro SIM slot (push pop-up slot)
Mini PCIe	1 x Mini PCIe for 4G module, 52Pin, 5.2mm(H)
FPC Jack	1 x Flip-type FPC Jack for connection with DEBIX Model A/B/SE, 19Pin 0.3mm pitch
LED	1 x 4G Running Indicator
Antenna	1 x 4G Antenna
Dimension	57mm(L) x 51.3mm(W) x 1.6mm(H)
Power Input	DC 5V/2A

I/O Interfaces:



Connection with 4G Module and DEBIX Model A/B:



Safety Instruction and Warnings:

General:

- Avoid exposure to water, moisture, and conductive surfaces while operating.
- Handle with care to avoid mechanical or electrical damage to the circuit board and connectors.
- Only handle the board by the edges when powered on to minimize the risk of electrostatic discharge damage.

Environment:

- Operate in a well-ventilated environment, even if using a case.
- Place on a stable, flat, non-conductive surface and avoid contact with conductive items.

Connections:

- Use peripherals that comply with relevant standards for the country of use and ensure proper insulation and operation.

Additional notes:

- This summary is not exhaustive, please refer to the full User Manual for details.
- If you are unsure about any aspect of safety or operation, consult a qualified professional.

Contact Us:

DEBIX

Community Address: <https://discord.com/invite/adaHHaDkH2>

Email: info@polyhex.net

Website: www.debix.io