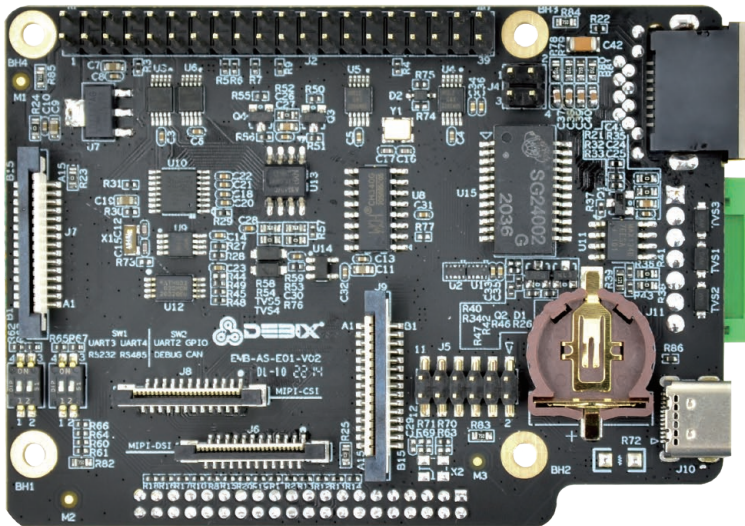


# DEBIX I/O Board



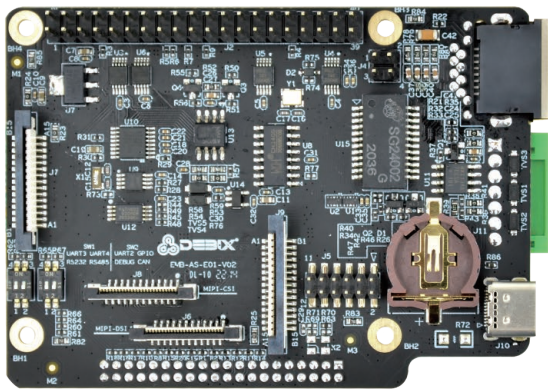
## DEBIX I/O Board

### Overview:

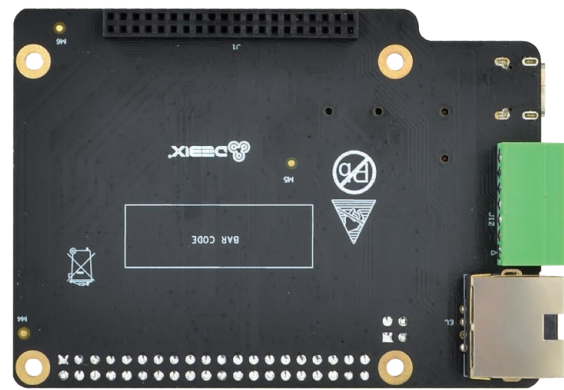
DEBIX I/O Board is an add-on board designed for DEBIX Model A, DEBIX Model B and DEBIX Model SE. It adds one RJ45 Gigabit network interface and PoE capability to your DEBIX Model A/B/SE. It comes with RS232, RS485 and CAN Transceiver to allow connection with more industrial equipment, and its strong expansion ability brings unlimited possibilities.

### Compatibility:

Compatible with DEBIX Model A, DEBIX Model B, DEBIX Model SE



(Front View)



(Back View)

### Specification:

#### I/O Interfaces

Network	1 x RJ45 Gigabit Network POE Supported (Compatible with POE power device module)
USB	1 x USB Type-C Debug (USB to Serial)
RTC	1 x RTC
Serial Ports	1 x RS232 1 x RS485
CAN	1 x CAN Transceiver
DIP Switch	2 x 2bit DIP Switch (used for selecting USB-Debug, RS232, RS485 and CAN)

#### Expansion

40-Pin Double-Row Headers	3 x UART, 2 x I2C, 2 x SPI, 2 x CAN, 6 x GPIO for default, can be reused as I2S, PWM, SPDIF and GPIO through software configuration.
MIPI CSI	1 x MIPI CSI
MIPI DSI	1 x MIPI DSI
EEPROM	1 x 2Kbit EEPROM

#### Accessories

Cables	2 x Flexible flat cable for DSI & CSI 1 x Female to female jumper wire for Ethernet
--------	--

#### Power Supply

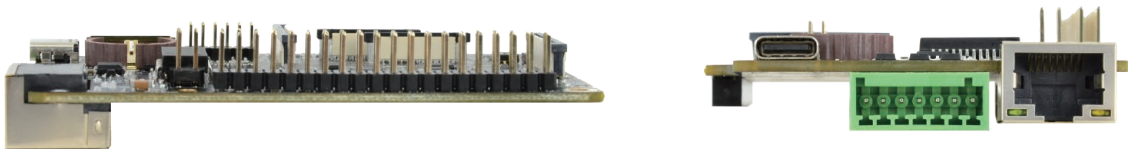
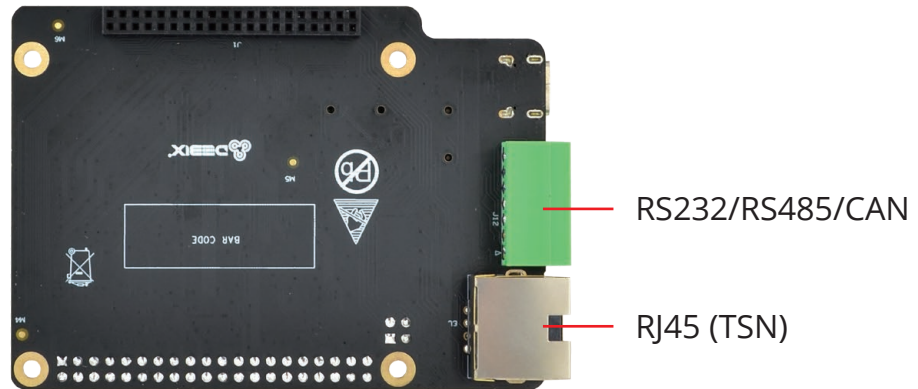
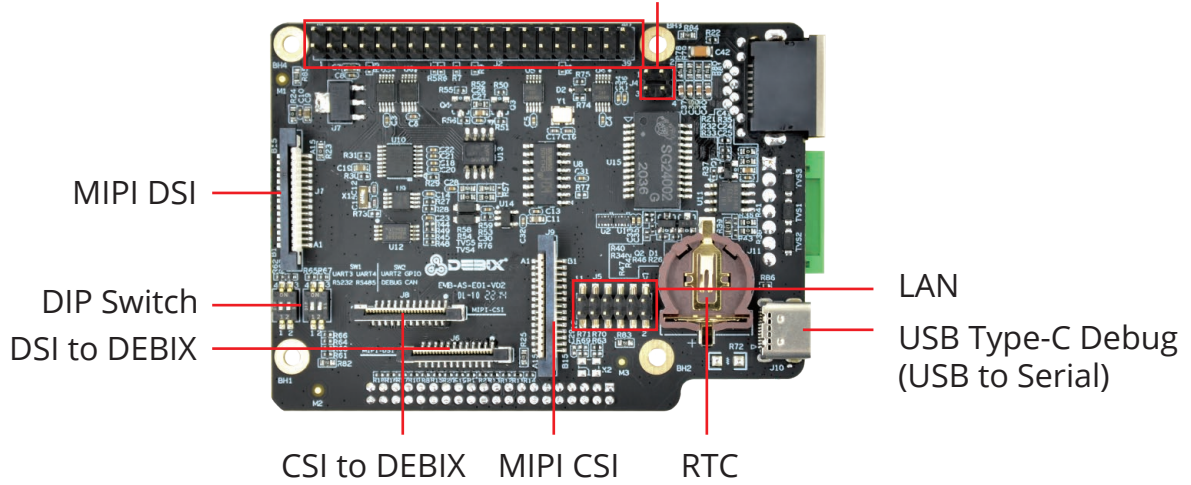
Power Input	DC 5V/500mA
-------------	-------------

Certificates:

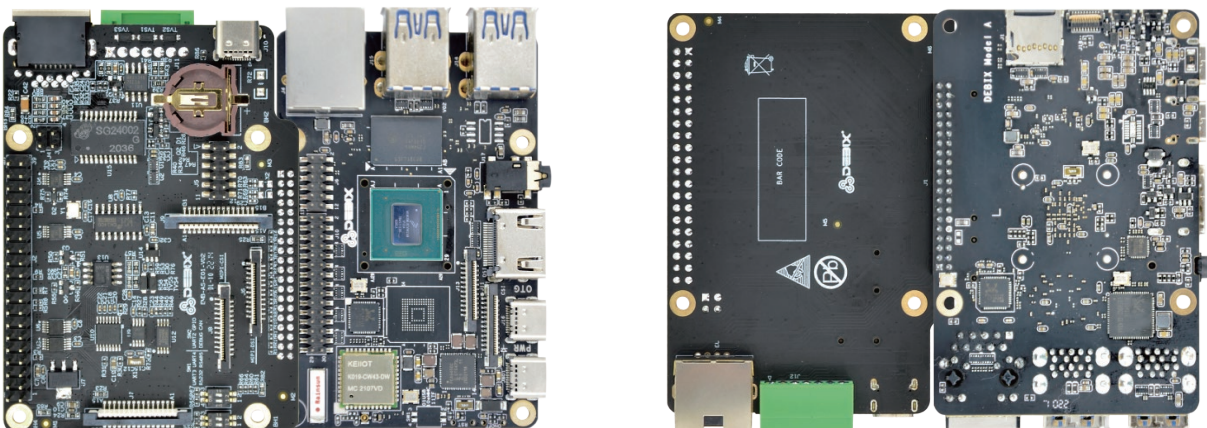


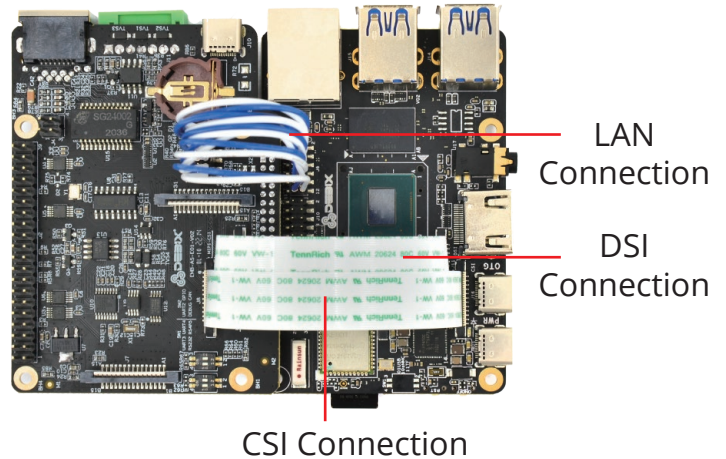
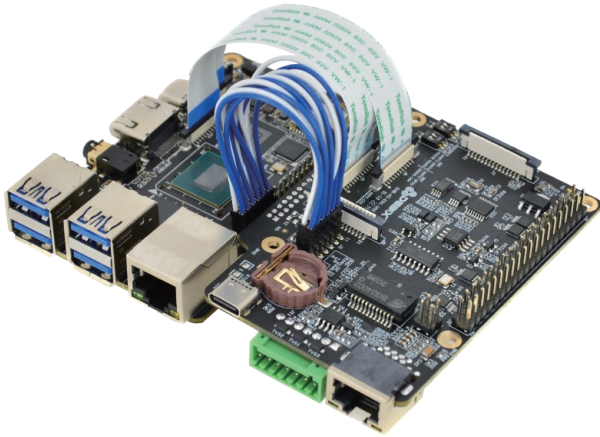
I/O Interfaces:

UART/I2C/CAN/GPIO/SPI... POE



Connection with DEBIX Model A/B:





## Safety Instruction and Warnings:

### **General:**

- Avoid exposure to water, moisture, and conductive surfaces while operating.
- Handle with care to avoid mechanical or electrical damage to the circuit board and connectors.
- Only handle the board by the edges when powered on to minimize the risk of electrostatic discharge damage.

### **Environment:**

- Operate in a well-ventilated environment, even if using a case.
- Place on a stable, flat, non-conductive surface and avoid contact with conductive items.

### **Connections:**

- Only connect compatible devices to the GPIO ports to avoid damage and warranty voiding.
- Use peripherals that comply with relevant standards for the country of use and ensure proper insulation and operation.

### **Additional notes:**

- This summary is not exhaustive, please refer to the full User Manual for details.
- If you are unsure about any aspect of safety or operation, consult a qualified professional.

---

## Contact Us:

DEBIX

Community Address: <https://discord.com/invite/adaHHaDkH2>

Email: [info@polyhex.net](mailto:info@polyhex.net)

Website: [www.debix.io](http://www.debix.io)