

ICE Tower Cooling Fan For Jetson Nano

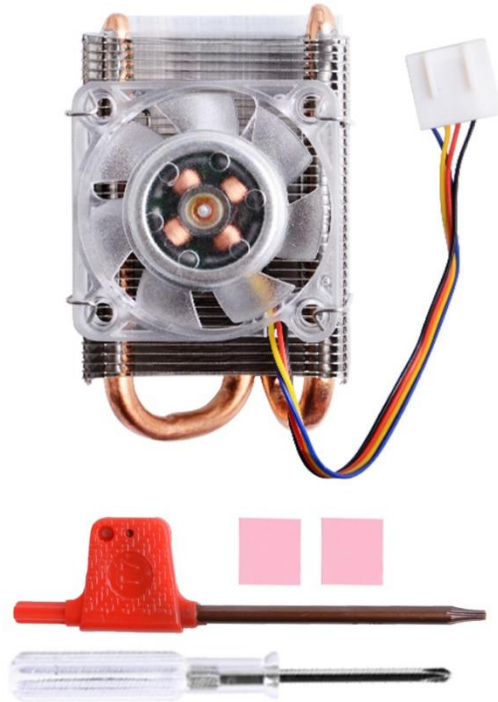
Product features

- Compatible with NVIDIA Jetson Nano Developer Board
- Easy to assemble
- CNC Machining
- Aluminum Material and Steel Material
- Steel Mounting Brackets
- Seven Color LED heat dissipation Fan
- Support PWM control the fan
- Extreme heat dissipation



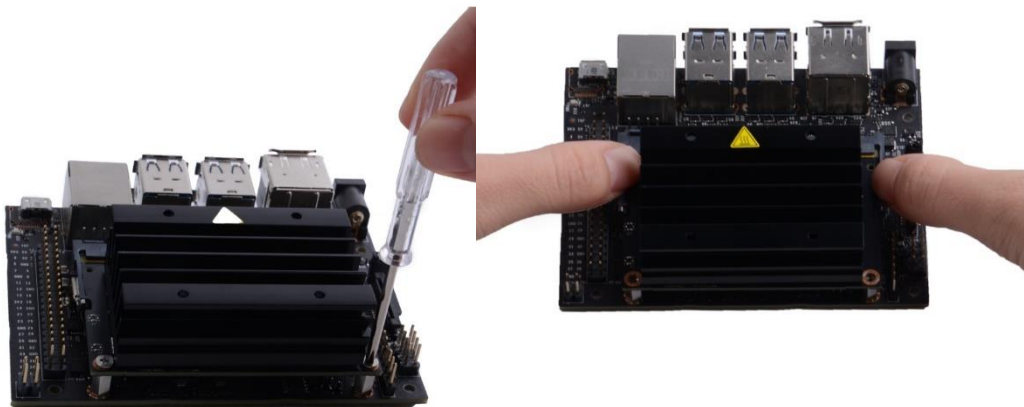
Package list

- 1 x Jetson Nano Horizontal Radiator with Colorful LED Fan(PWM)
- 1 x Assemble Manual
- 1 x Mini Hexagon screw driver

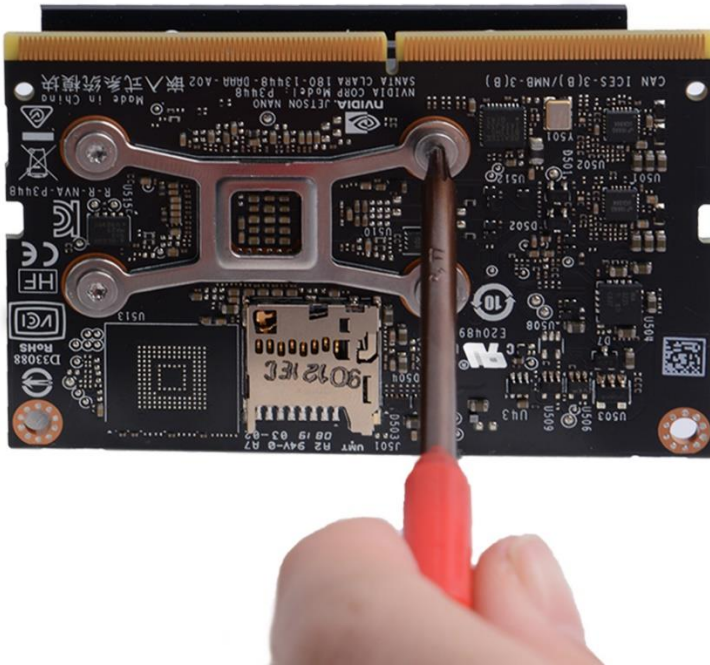


Installation instructions

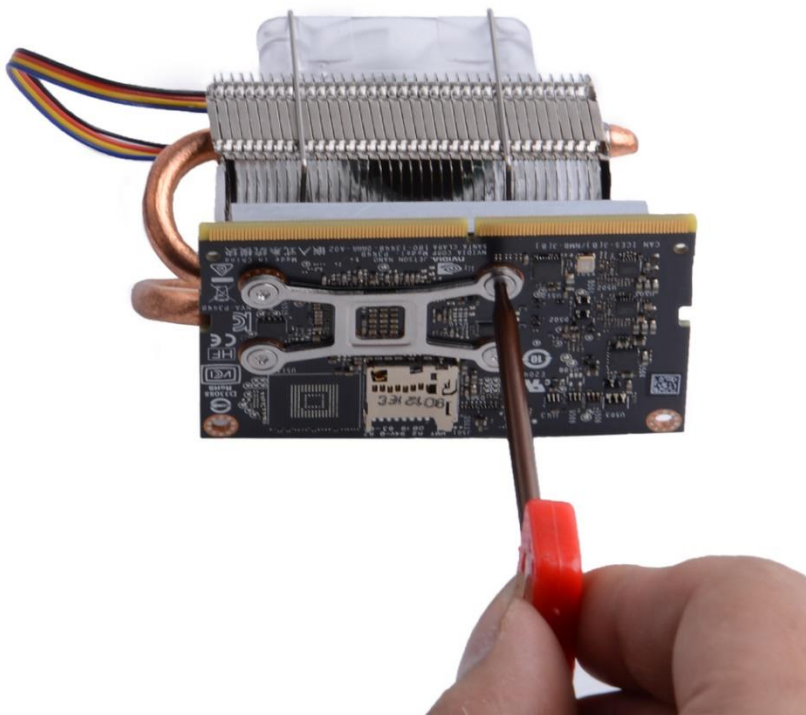
1. Remove mounting screws and then pull out the mainboard by two finger slightly.



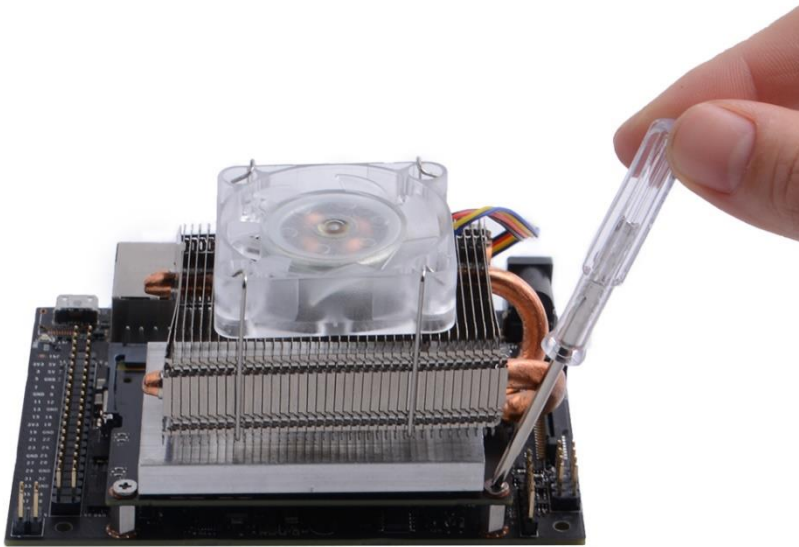
2. Take out the Jetson Nano mainboard and unscrew the screws on the back of mainboard and remove the original heat sink from the board.



3. Fixed the Ice tower radiator to the mainboard with screws and please pay attention to the direction of mounting racket.



4. Put it back to the mainboard and then fixed it with screws.



5. Connect fan to mainboard on J15 as following picture, please beware of the direction of the cable.



Note: The fan is driven by PWM signal, so you should execute this command in a terminal when you login to the system: `sudo /usr/bin/Jetson_clocks` and then the fan will spin and adjust the speed by the temperature of Jetson nano.

Package Size

